

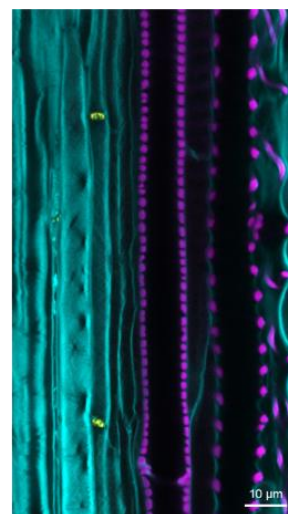
2-year Postdoc position in Plant Biology in Neuchâtel, Switzerland

The Laboratory of Plant Cell and Developmental Physiology of Prof. Lothar Kalmbach at the University of Neuchâtel (UniNE), Switzerland is recruiting a **postdoctoral researcher**.

Our work investigates the molecular and genetic underpinnings of cellular specialization in plants. We use the phloem of the plant vascular system as a model to investigate how cellular mechanisms shape transport and distribution of photosynthetic products. Our goal is to understand how specific cellular mechanisms emerge during development and determine the characteristics of long- and short-distance transport into terminal sink tissues. To this end, we employ and develop sophisticated genetic and molecular tools, high-resolution- and live-imaging at multiple scales, transcriptomics, cell biology, and quantitative physiology to link cellular phenomena to growth and metabolism.

We're looking for a candidate with a background in plant development and a broad interest in plant biology who wants to make meaningful contributions to fundamental science as well as towards more resilient crop plants. We're looking for a future colleague who is interactive, curious, and resourceful to become part of our research group at the intersection of cell biology and organismal physiology.

The successful candidate will contribute to establishing a new line of research in the Kalmbach lab addressing the characteristics and regulation of radial transport of organic nutrients from the vascular tissues into and beyond its neighboring cells during tissue differentiation in the root. To do so, the candidate will identify and characterize candidate genes, generate new mutants, and perform metabolomic and physiological analyses to establish a framework for organic nutrient transport in roots.



- Requirements:**
- PhD in a relevant field, awarded recently or by summer 2025
 - At least one first author publication (accepted, published, or preprinted)
 - Willingness to apply for independent funding
 - Proficiency in English (oral and written)
 - Previous experience in one or several of the following fields:
 - Confocal microscopy
 - Molecular and classical genetics
 - Plant physiology
 - Root development
 - Plant nutrition
 - Plant vascular biology

- We offer:**
- 2-year fully funded employment with social benefits
 - Supportive and flexible work environment
 - A collaborative, diverse, and thriving plant science community

Workplace: We are part of the Institute of Biology of the University of Neuchâtel (www.unine.ch/biologie) and are located above the lake Neuchâtel with a spectacular view over the Alps. The institute comprises research groups in plant biology, microbiology, ecology, and evolutionary genetics and offers on-site state-of-the-art microscopy and access to metabolomics facility. In Western Switzerland, we enjoy a collegial and diverse research community. Combined with easy and efficient national and international travel, this provides excellent possibilities for networking and access to state-of-the-art technical platforms.

To apply, please send your letter of motivation, CV, and names and contact details of two referees to lothar.kalmbach@unine.ch by 15th May 2025.

Starting date: The position is available immediately. The exact starting date is negotiable but should be before October 2025.