



GBIF SWISS NODE 

GBIF Switzerland

EU Nodes Meeting 2012 Berlin, BGBM & MfN



Pascal Tschudin · Yves Gonseth
contact.gbif@unine.ch



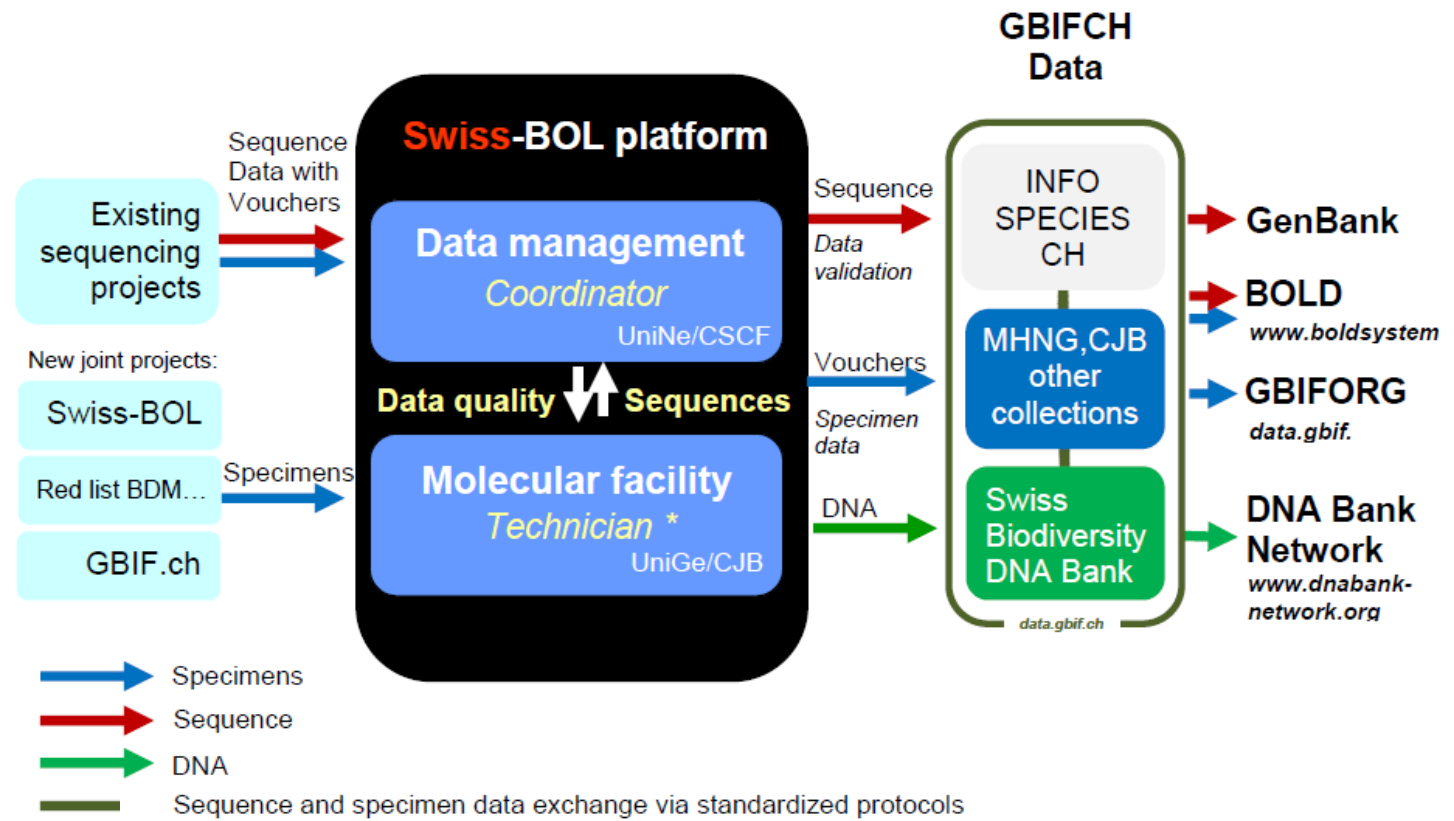
GBIF.ch 2012-2016

1. Continuation of digitization projects
2. Stabilisation and documentation of the IT infrastructure
3. Contribution to the SwissBOL-network implementation





GBIF.ch 2012-2016





Ricerca

Ricerca di un dato preciso

Cercare

Nome scientifico :

Entità geografica :

Istituzione : Musée cantonal de zoologie, Lausanne

▶ Attivare la ricerca avanzata

Cancelar tutto

Eseguire

103 dati corrispondono ai criteri selezionati.

GBIFCHID	IST	IMG	Nome scientifico	Taxon	Status del tipo	Paese	PAI
MZL-INVERT-68471	MZL	YES	Pomatias glaucus	Gastropoda Caenogastropoda Pomatiidae	Sintipo	Libano	
MZL-INVERT-68371	MZL	YES	Solatopupa psarolena	Gastropoda Eupulmonata Chondrinidae	Sintipo	Francia	
MZL-INVERT-68372	MZL		Agathylla sulcosa diminuta	Gastropoda Eupulmonata Clausiliidae	Sintipo	Croazia	
MZL-INVERT-68373	MZL	YES	Agathylla sulcosa sulcosa	Gastropoda Eupulmonata Clausiliidae	Sintipo	Croazia	
MZL-INVERT-68382	MZL	YES	Albinaria avia	Gastropoda Eupulmonata Clausiliidae	Sintipo	Cipro	
MZL-INVERT-68375	MZL	YES	Albinaria brevicollis brevicollis	Gastropoda Eupulmonata Clausiliidae	Sintipo	Grecia	
MZL-INVERT-68376	MZL	YES	Albinaria cretensis byzantina	Gastropoda Eupulmonata Clausiliidae	Sintipo	Grecia	
MZL-INVERT-68383	MZL	YES	Albinaria forbesiana bigibbosa	Gastropoda Eupulmonata Clausiliidae	Sintipo	Turchia	
MZL-INVERT-68377	MZL	YES	Albinaria profuga	Gastropoda Eupulmonata Clausiliidae	Sintipo	Grecia	
MZL-INVERT-68379	MZL	YES	Albinaria schuchii liebetruti	Gastropoda Eupulmonata Clausiliidae	Sintipo	Grecia	


1/11

Numero di righe per pagina :



Enter a scientific name and click Add Filter.

This filter will return any records that have a matching name given for the identification of the organism, regardless of how the organism is classified.

Catalogue number is MHNG-PSYLL-1332 

Search

This search matches 8 occurrence records.

Actions

View: [Matching records as table](#) [Matching records on map](#)

Specify: [Data publishers to be included in search](#) [Datasets to be included in search](#) [Countries to be included in search](#)

Download: [Spreadsheet of results](#) [Darwin core \(maximum 100,000\)](#) [Google Earth \(maximum 50,000\)](#) [Species in results](#)

Create: [Niche Model](#)

Sample results


Scientific Name	Dataset	Institution Code	Collection Code	Catalogue Number	Basis of Record	Date	Coordinates	Country	
<i>Bactericera salicivora</i>	Muséum d'histoire naturelle de la Ville...	MHNG	Muséum d'Histoire naturelle de la Ville...	MHNG-PSYLL-1332	Specimen		44.3365°N, 85.4385°W	United States	View
<i>Metrioptera</i>	Muséum d'histoire naturelle de la Ville...	MHNG	Muséum d'Histoire naturelle de la Ville...	MHNG-PSYLL-1332	Specimen		44.3365°N, 85.4385°W	United States	View
<i>Bactericera harrisoni</i>	Muséum d'histoire naturelle de la Ville...	MHNG	Muséum d'Histoire naturelle de la Ville...	MHNG-PSYLL-1332	Specimen		44.3365°N, 85.4385°W	United States	View
<i>Bactericera nigricornis</i>	Muséum d'histoire naturelle de la Ville...	MHNG	Muséum d'Histoire naturelle de la Ville...	MHNG-PSYLL-1332	Specimen		44.3365°N, 85.4385°W	United States	View
<i>Bactericera melanoparia</i>	Muséum d'histoire naturelle de la Ville...	MHNG	Muséum d'Histoire naturelle de la Ville...	MHNG-PSYLL-1332	Specimen		44.3365°N, 85.4385°W	United States	View





Enter a scientific name and click Add Filter.

This filter will return any records that have a matching name given for the identification of the organism, regardless of how the organism is classified.

Catalogue number is MHNG-PSYLL-1332 

This search has matched one occurrence record.

Actions

View: [Matching records as table](#) [Matching records on map](#)

Specify: [Data publishers to be included in search](#) [Datasets to be included in search](#) [Countries to be included in search](#)

Download: [Spreadsheet of results](#) [Darwin core \(maximum 100,000\)](#) [Google Earth \(maximum 50,000\)](#) [Species in results](#)

Create: [Niche Model](#)

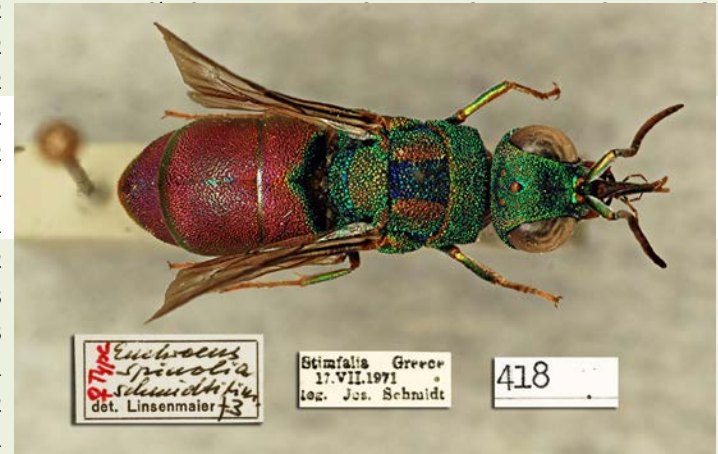
Sample results

Scientific Name	Dataset	Institution Code	Collection Code	Catalogue Number	Basis of Record	Date	Coordinates	Country	
<i>Bactericera salicivora</i>	Muséum d'histoire naturelle de la Ville...	MHNG	Muséum d'histoire naturelle de la Ville...	MHNG-PSYLL-1332	Specimen		44.3365°N, 85.4386°W	United States	View



Exemplify the interinstitutional data flow

Institution	NUESP	COFS	Location	CKM2	PR	PRECISION GÉOGRAPHIQUE	Canton	Pays	JJ	MM	AAAA
BNM	52000	3762	Scuol, Chavalatsch zwischen Sot Saas und Sent	818186	1	supérieur à 9km2	GR	CH	1	7	1920
BNM	52000	3762	Scuol, Sot Sass	819187	2	entre 1 et 9km2	GR	CH	17	7	1920
BNM	52000	3762	Scuol, Sot Sass	819187	2	entre 1 et 9km2	GR	CH	8	7	1920
BNM	52443	3746	Zernez, Munt Baselgia	805176	2						1922
BNM	52449	3745	Tarasp, Strasse Scuol - Kurhaus	816185	2						1921
BNM	52449	3742	Guarda, Giarsun	806183	2						1920
ETHZ	52508	82	Boppelsen, Lägeren	672259	2						1864
ETHZ	52508	120	Wald, Bachtel	709239	2						1867
ETHZ	52508	261	Zürich	683247	1						
ETHZ	52510	3911	Churwalden	760183	1						
MHNG	53860	6638	Satigny, Peney	491117	2						1889
MHNG	53860	6621	Genève, Jonction	498117	3						1884
MHNG	53331	223	Neftenbach, Thalgut	690264	3						1915
MHNG	53331	3745	Tarasp	815184	1						
MHNG	53331	6638	Satigny, Peney	491117	2						1885
MHNG	53335	3561	Poschiamo, Val Poschiamo	801133	1						1922
MZL	52449	6151	Champéry, Col de Bretolet	550110	3	<1km2 (dans le km2)	VS	CH	18	7	1964
MZL	52449	5581	Belmont-sur-Lausanne, Signal de Belmont	542153	2	entre 1 et 9km2	VD	CH	5	7	1946
MZL	52451	5643	Préverenges	530152	1	supérieur à 9km2	VD	CH	6	6	1946
MZL	52802	5456	Cudrefin, La Sauge	570202	3	<1km2 (dans le km2)	VD	CH	27	8	1959
MZL	52802	6081	Agettes, Les, Les Mayens-de-Sion	595116	2	entre 1 et 9km2	VS	CH		8	1965
MZL	52806	5586	Lausanne, Gd. Jorat, Ste. Catherine	544157	2	entre 1 et 9km2	VD	CH	10	9	1959





Proactive strategy

The international initiative acts as necessary catalyst for developing effective action at the:

national level:

- 1) development of the necessary IT infrastructures (solving problems of heterogeneous/multilingual information)
- 2) involvement of the two main biodiversity resources (collection/observation), including confidential data

